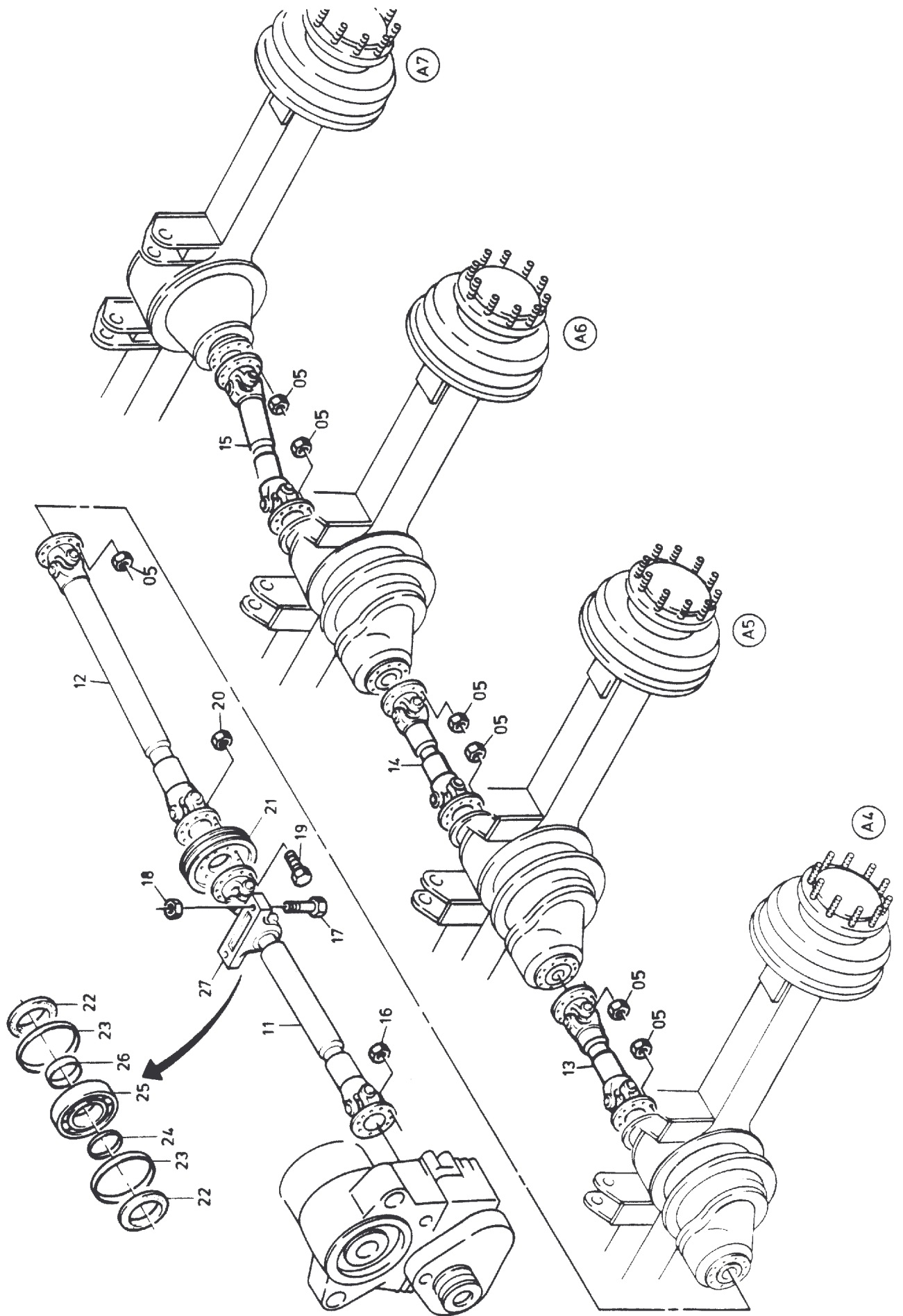


213-3650-3

Seite/Page 1 / 3



213-3650-3

Seite/Page 2 / 3

| Bild-Nr Fig Fig Fig Bild nr | ET-Nr Part-No No. de Piece No. de Pieza No. del Pezzo Detalj nr | Stückzahl Qty Qte Ctd Qta Antal | | Gegenstand Description Designation Descripcion Designazione Benaemning |
|--|---|---|-----------------------------------|--|
| 03 | 316 223 40 | 1 | Gelenkwelle | Joint shaft |
| 04 | 316 220 40 | 1 | Gelenkwelle | Joint shaft |
| 05 | 287 113 40 | 80 | Mutter | Nut |
| 06 | 287 123 40 | 8 | Schraube | Screw |
| 07 | 287 124 40 | 8 | Mutter | Nut |
| 08 | 502 686 98 | 4 | Mutter | Nut |
| 09 | 224 105 40 | 12 | Mutter | Nut |
| 10 | 501 466 98 | 12 | Schraube | Screw |
| 11 | 337 661 40 | 1 | Gelenkwelle bis Bau-Nr. 35 036 | Joint shaft up to s/no: 35 036 |
| 11 | 433 399 40 | | Gelenkwelle ab Bau-Nr. 35 037 | Joint shaft from s/no: 35 037 |
| 12 | 418 078 40 | 1 | Gelenkwelle | Joint shaft |
| 13 | 337 663 40 | 1 | Gelenkwelle | Joint shaft |
| 14 | 432 090 40 | 1 | Gelenkwelle | Joint shaft |
| 15 | 432 091 40 | 1 | Gelenkwelle | Joint shaft |
| 16 | 501 724 98 | 10 | Mutter | Nut |
| 17 | 308 670 99 | 2 | Schraube | Screw |
| 18 | 334 680 99 | 2 | Mutter | Nut |
| 19 | 308 873 99 | 10 | Schraube | Screw |
| 20 | 192 580 40 | 10 | Mutter | Nut |
| 21 | 315 270 40 | 1 | Riemenscheibe | Pulley |
| 22 | 360 678 99 | 2 | Filzstreifen | Seal |
| 23 | 500 584 98 | 2 | Festring | Ring |
| 24 | 316 231 40 | 1 | Distanzring 10 lg. | Spacer |
| 25 | 360 018 99 | 1 | Kugellager | Ball bearing |
| 26 | 316 230 40 | 1 | Distanzring 19 lg. | Spacer |
| 27 | 500 583 98 | 1 | Lagergehäuse | Bearing retainer |

Gelenkwelleneinbau, Achse 1-7
Joint Shaft Mounting, Axle 1-7

213-3650-3

Seite/Page 3 / 3